

# Tiếng Anh 5



# Unit 3 **My foreign friends**

## Lesson 2 – Period 4



# Table of contents

01

- Warm up and Review

02

- Listen and number.

03

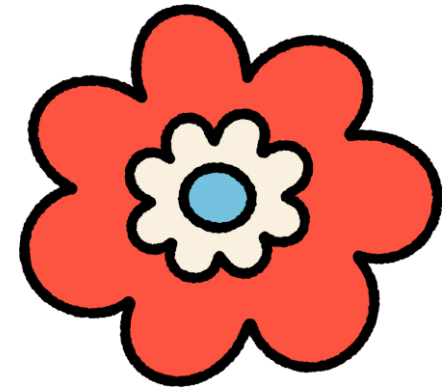
- Read and complete.

04

- Let's play.

05

- Fun corner and Wrap-up



01

# Warm-up and review

Game

WHAT IS THE

WORD?

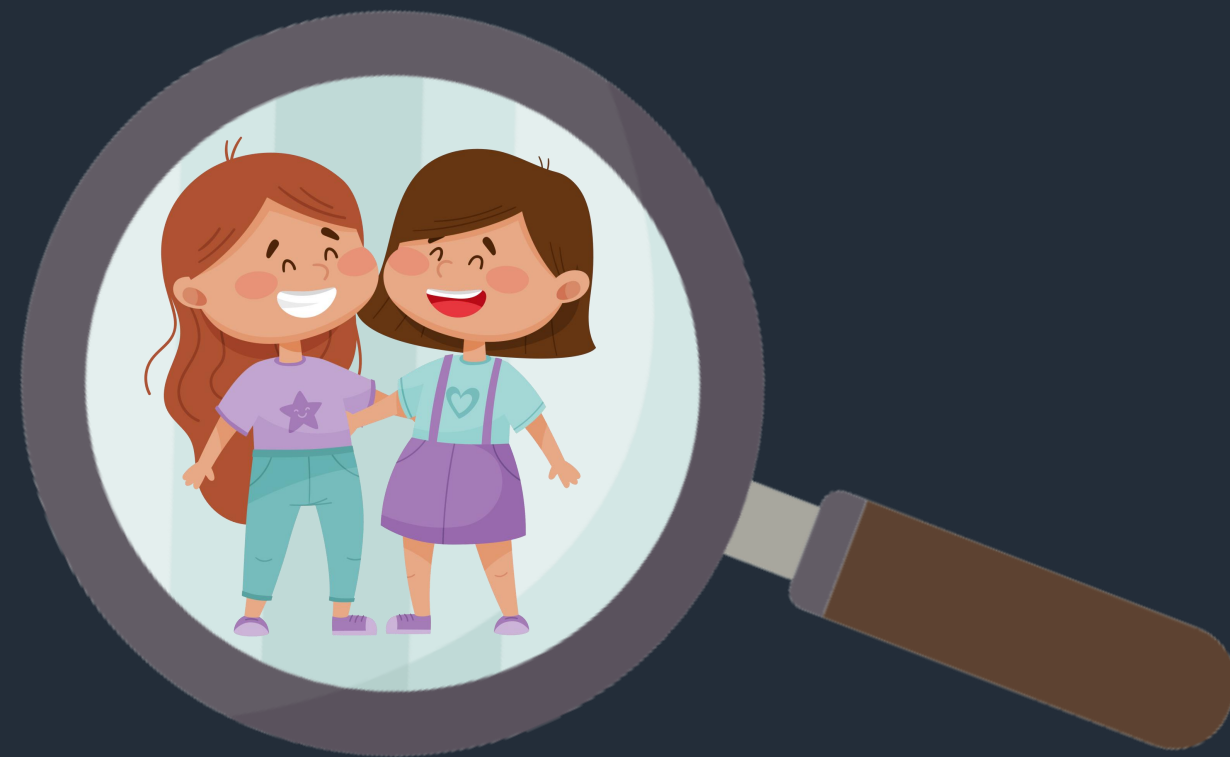


Do you know these words?  
Will 10 seconds be enough for you  
to solve the puzzle?

Are you  
ready?

WHAT IS THE WORD?

**E F I N D L R Y**



# friendly



# WHAT IS THE WORD?

**I M S L**



# slim



# WHAT IS THE WORD?

**R V E E L C**



clever



# WHAT IS THE WORD?

**R H T S O**



# short



# WHAT IS THE WORD?

**I C V T E A**



# active



# WHAT IS THE WORD?

**G I B**



big



# WHAT IS THE WORD?

**A L T L**



tall



# WHAT IS THE WORD?

**F H E U L P L**

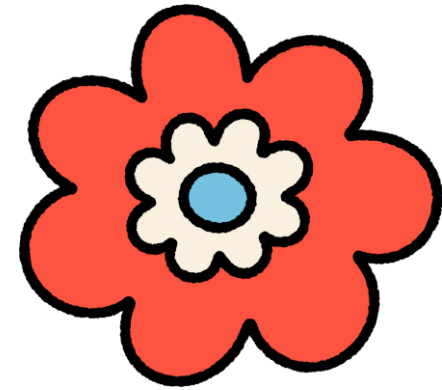


# helpful



Good job!!!

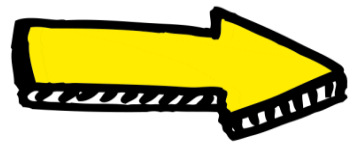
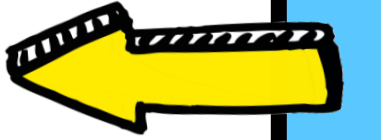
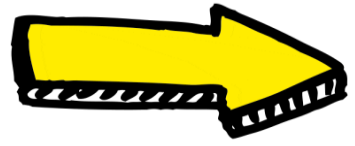




02

**Listen and number.**

# ASK AND ANSWER.



# LISTEN AND NUMBER.



# LISTEN AND NUMBER.

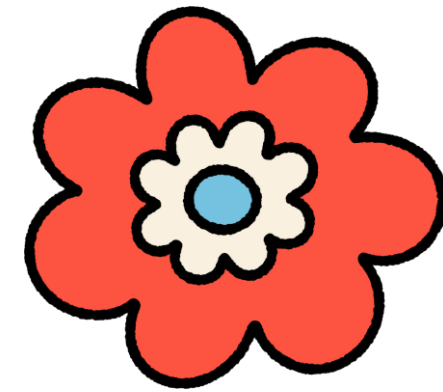


# SWAP YOUR BOOKS



# LISTEN AND CHECK.





03

**Read and complete.**

# READ AND GUESS.

1. A: I have a new friend at school.

He's Malaysian.

B: Really? I also have a friend from

Malaysia. Is he from Kuala Lumpur?

A: Yes, he is.

B: What's he like?

A: He's helpful. He likes helping others.



## READ AND GUESS.

2. A: Do you have a new English teacher?

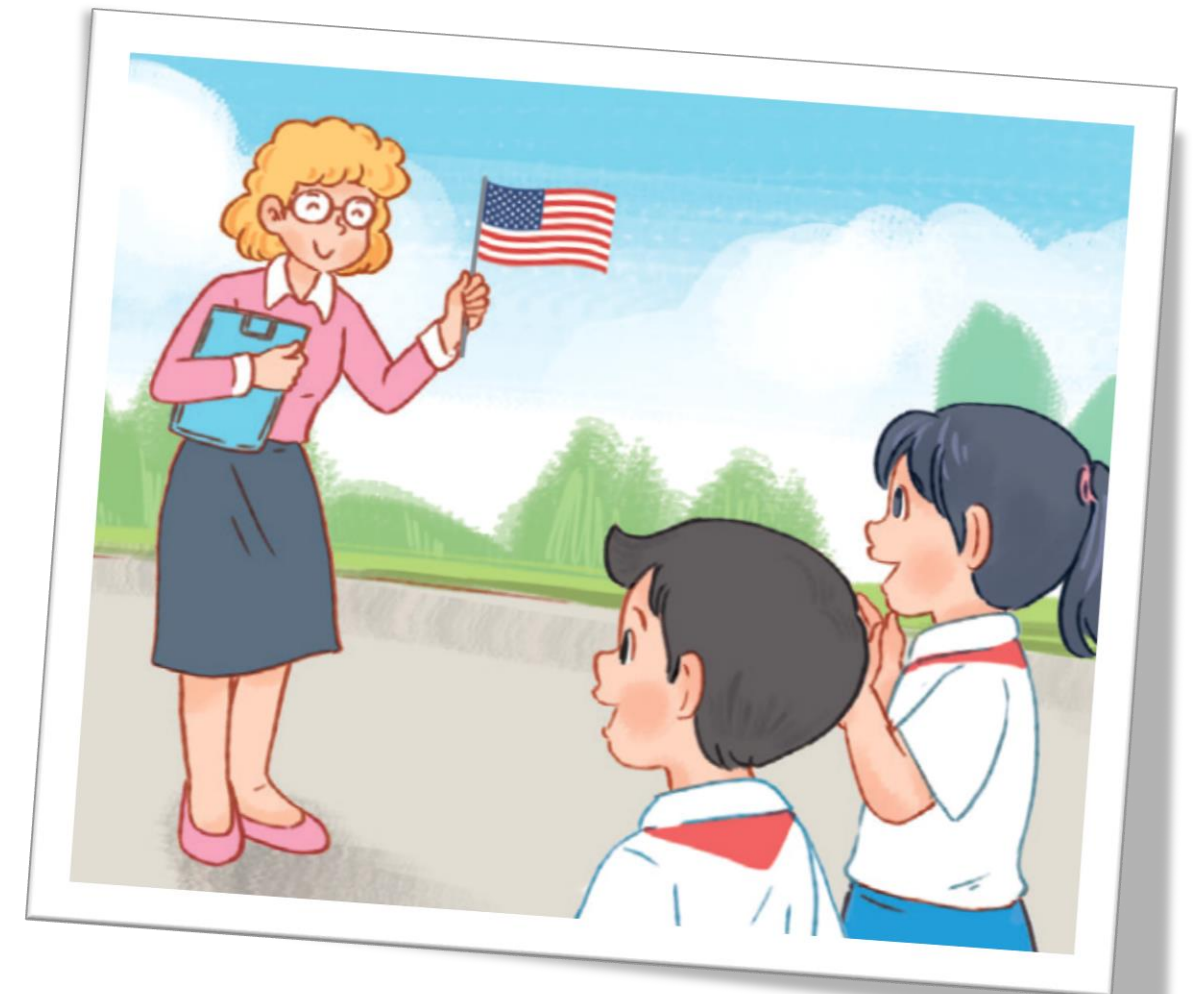
B: Yes, I do.

A: What nationality is she?

B: She's \_\_\_\_\_.

A: What's she \_\_\_\_\_?

B: She's friendly.



# SWAP YOUR BOOKS



# LET'S CHECK.

2. A: Do you have a new English teacher?

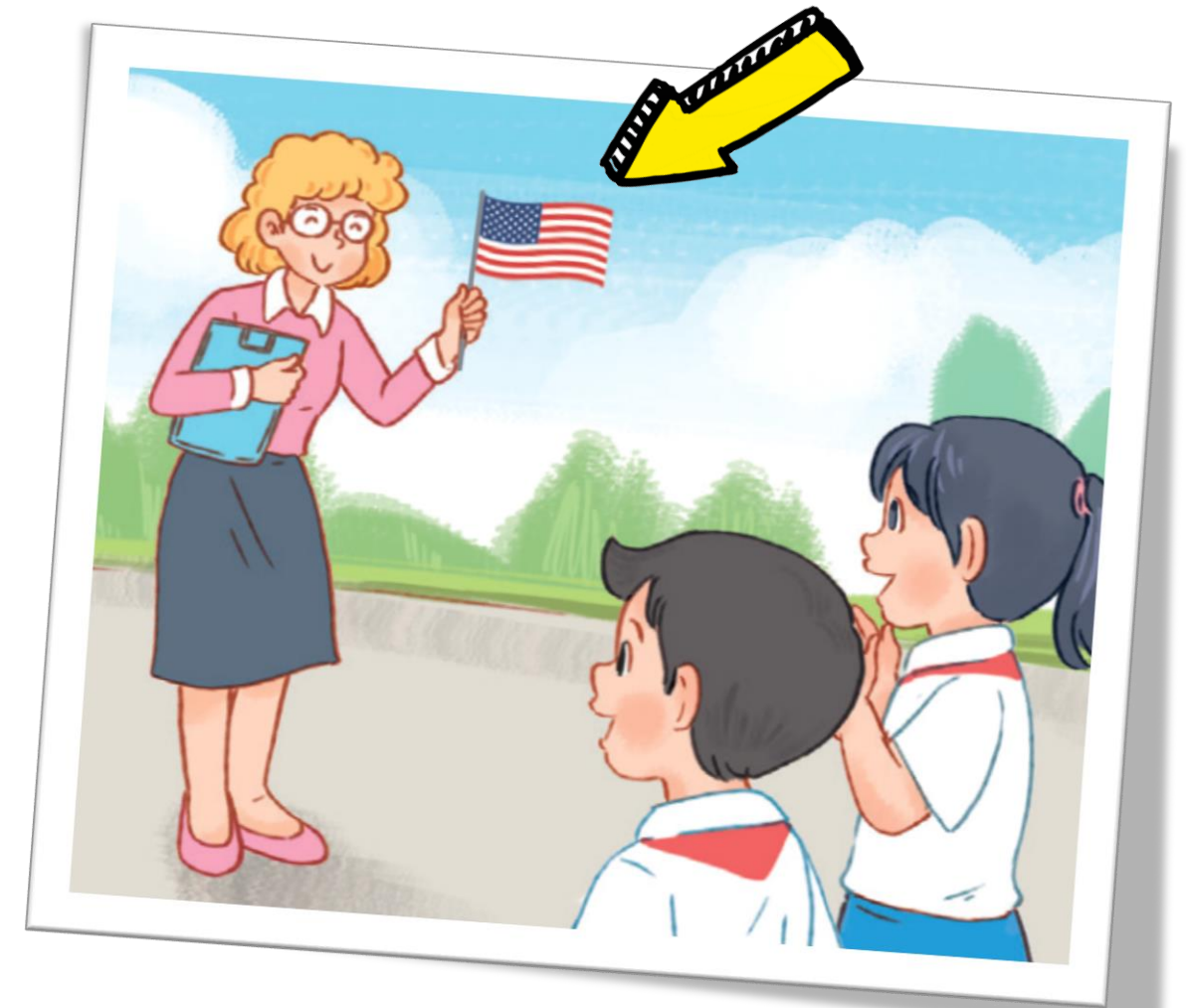
B: Yes, I do.

A: What nationality is she?

B: She's American.

A: What's she like?

B: She's friendly.



# True or False



The new friend is from  
America.

False

True



# False

The new friend is from  
Malaysia.

The new friend  
is helpful. He  
likes helping  
others.

False

True



# True

The new friend is helpful.  
He likes helping others.

The new English teacher  
is from America.



False

True

# True

The new English teacher is from  
America. She's American.

The new English teacher  
is not friendly.

False

True

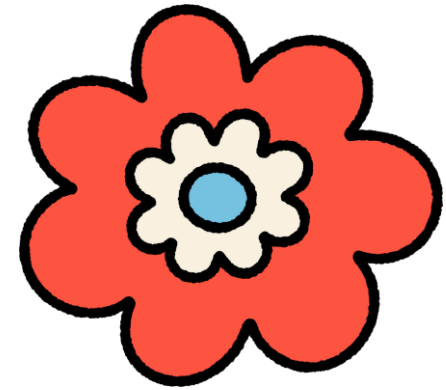


# False

The new English teacher is *friendly*.



Great Job!



04

**Let's play.**

# WORK IN GROUPS

Group 1 \* \* \*

Group 2 \*

Group 3 \*

Group 4 \*

Group 5 \*

Group 6 \*

Group 7 \* \*

Group 8 \*

Group 9 \*

Group 10 \* \* \*

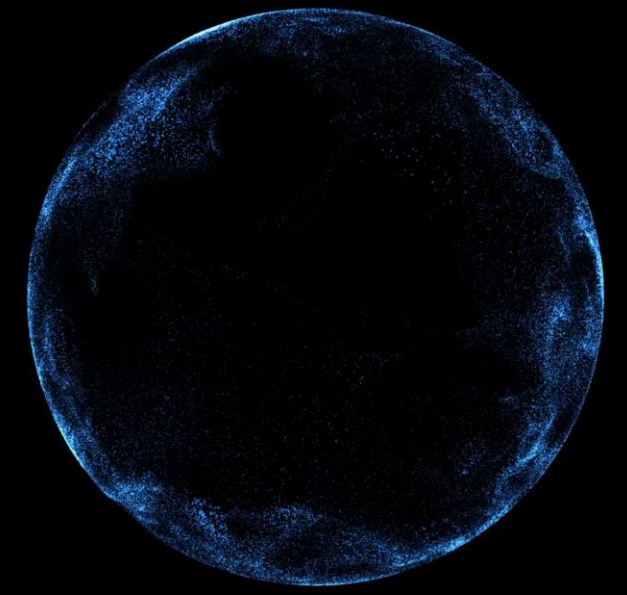
1

2

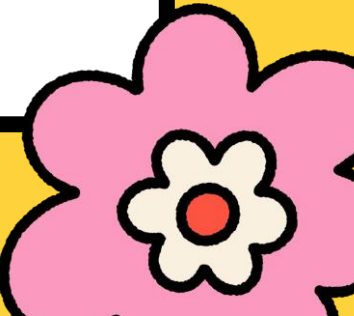
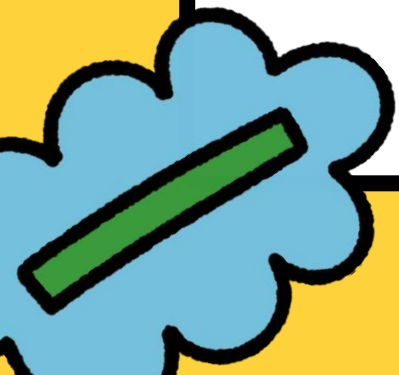
3

4

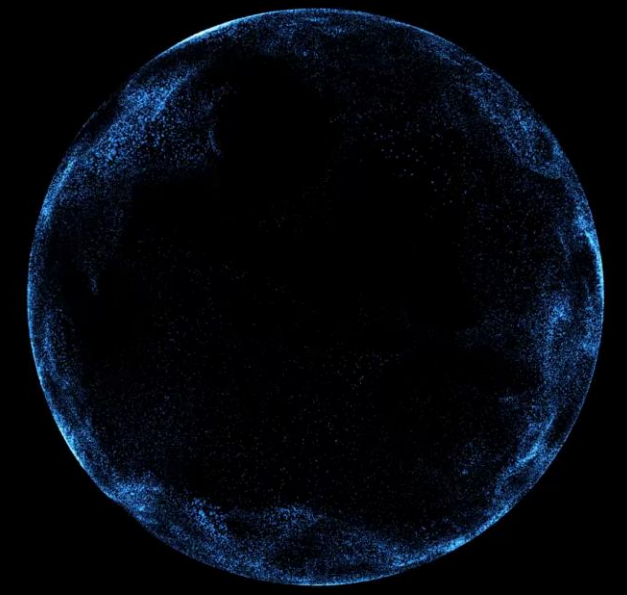
**LOOK AND WRITE.**



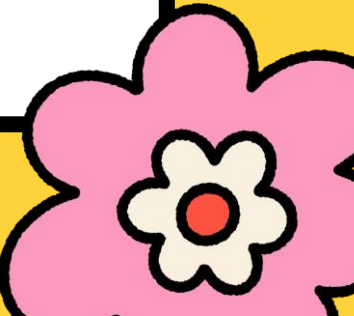
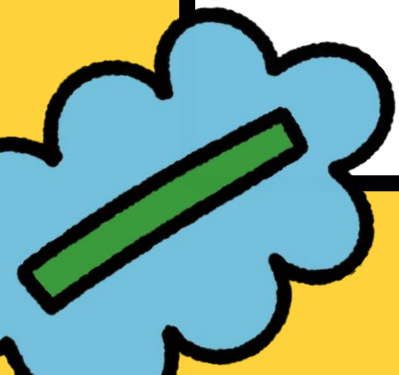
**friendly**



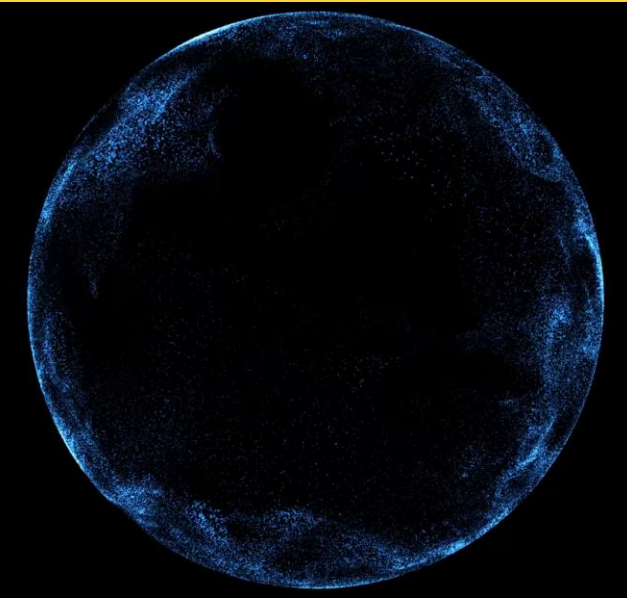
**LOOK and WRITE.**



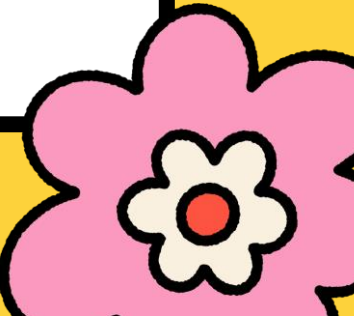
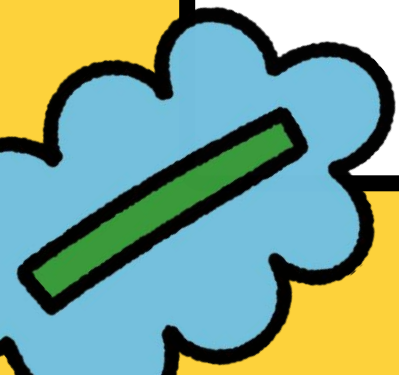
**active**



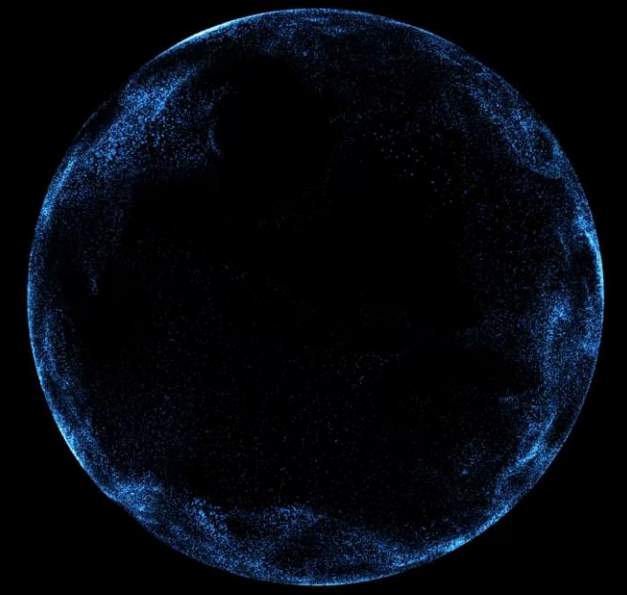
**LOOK and WRITE.**



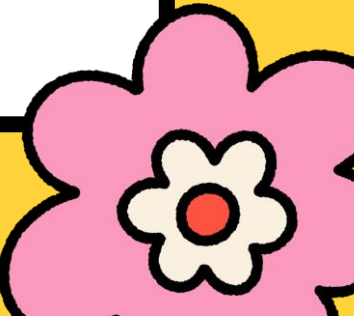
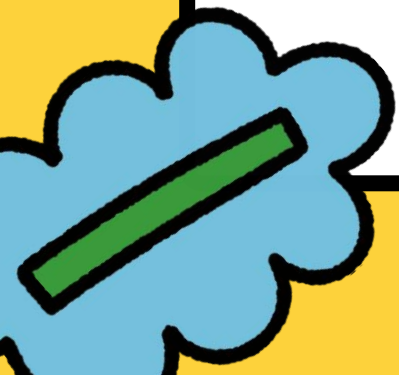
**helpful**



**LOOK and WRITE.**



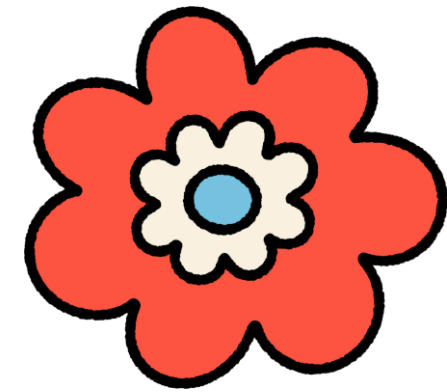
**clever**



Nice  
WORK

---





05

**Fun corner  
and Wrap-up**

*Let's  
spin the wheel!*



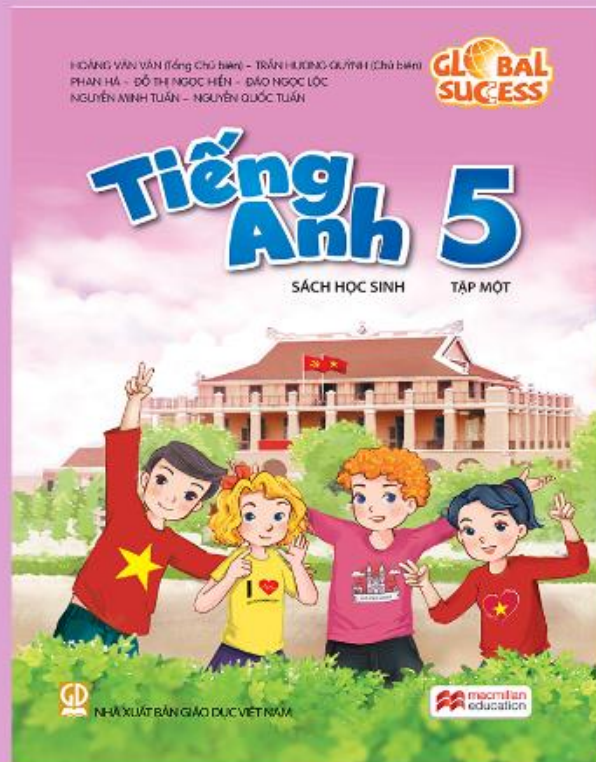


Nice  
WORK

---



# THANK YOU



**Website:** [hoclieu.vn](http://hoclieu.vn)

**Fanpage:** <https://www.facebook.com/tienganhglobalsuccess.vn/>